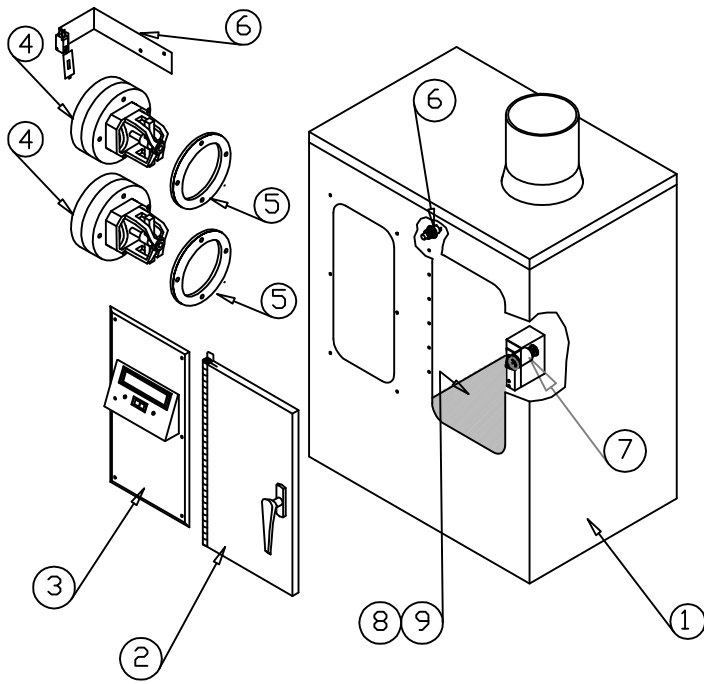


STATION ASSEMBLY A-41000

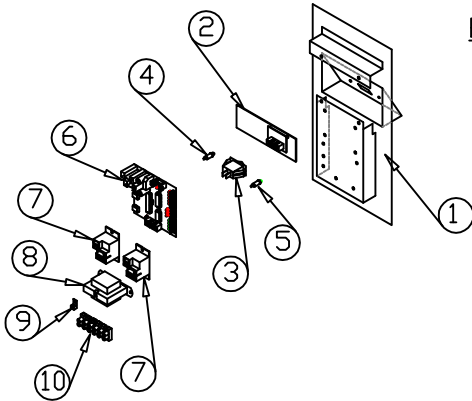


ITEM	REQ'D	DESCRIPTION	PART NO.
①	1	STATION BODY	A-XXXXX
②	1	DOOR ASSEMBLY	A-9637
③	1	ELECTRICAL PANEL	A-11961
④	2	TURBO COMPRESSOR	E-0700
⑤	2	MOTOR GASKET	R-6823
⑥	1	SAIL SWITCH & BRKT	A-9619
⑦	1	DOOR SWITCH	A-0004
⑧	1	SOLENOID & BRACKET	A-9535
⑨	1	LANDING PAD	A-6836
⑩	1	INSULATION KIT	A-6865

WIRE PER WIRING DIAGRAM # E-11793
FOR PRESSURE - PRESSURE SYSTEMS

STATION ASSEMBLY(A-41000)

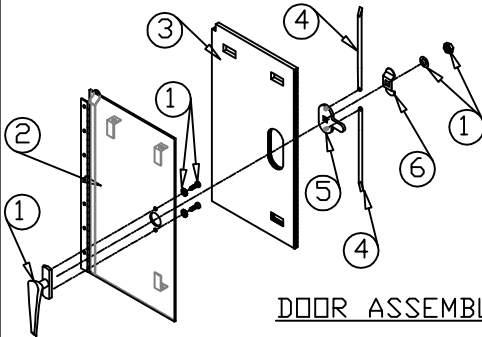
ELECTRICAL PANEL ASSEMBLY (A-11961)



ITEM	REQ'D	DESCRIPTION	PART NO.
①	1	ELEC PANEL PLATE	A-11962
②	1	LCD CIRCUIT CARD	E-11963
③	1	SEND SWITCH	E-11618
④	1	LED (RED)	E-20163
⑤	1	LED (GREEN)	E-20164
⑥	1	M1 PCB	E-11907
⑦	2	RELAY	E-11166
⑧	1	TRANSFORMER 24 V	E-11167
⑨	1	GROUND LUG	A-XXXXX
⑩	1	TERMINAL BLOCK	E-11306

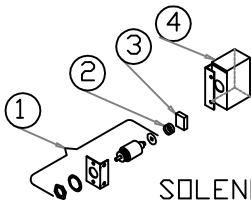
ELECTRICAL PANEL ASSEMBLY
(A-11961) (SHOWN FROM REAR)

DOOR ASSEMBLY (A-9637)



ITEM	REQ'D	DESCRIPTION	PART NO.
①	1	HANDLE ASSEMBLY	A-9639
②	1	DOOR SUB-ASSEMBLY	A-9636
③	1	DOOR SEAL	R-6804
④	2	LOCKING ARM	J-9640
⑤	1	CAM	M-2001
⑥	1	HOLDING PLATE	M-2002

DOOR ASSEMBLY (A-9637)



ITEM	REQ'D	DESCRIPTION	PART NO.
①	1	SOLENOID	A-1226
②	1	SPRING	J-11355
③	1	NEOPRENE (3"x1.5"x1/4")	NONE
④	2	BRACKET, SOLENOID	J-9536

SOLENOID ASSEMBLY (A-9535)



INFORMATION CONTAINED HEREIN IS PROPRIETARY TO EAGLE PNEUMATIC, INC ALL RIGHTS RESERVED.

TOLERANCES:
UNLESS OTHERWISE SPECIFIED
FRACTIONS +/-1/32"
DECIMALS +/-0.005"

REVISIONS:

4 INCH TYPE I
ULTIMATE STATION
COMPONENT PARTS

DRAWN BY: JAC

DATE: ___

NAME:
4 INCH TYPE II
ULTIMATE
STATION W/LCD
OPTION
COMPONENT PARTS

PART NO.

A-41000

CADFILE: --- ISS: 01